



EUROMIND
Creating an innovative EUROpean Open Maritime Industry through
facilitating the integration of standards into new business practices and
services

**Best practice found in
EUROMIND**

Malte Ulrich – NSMT im DIN e. V.

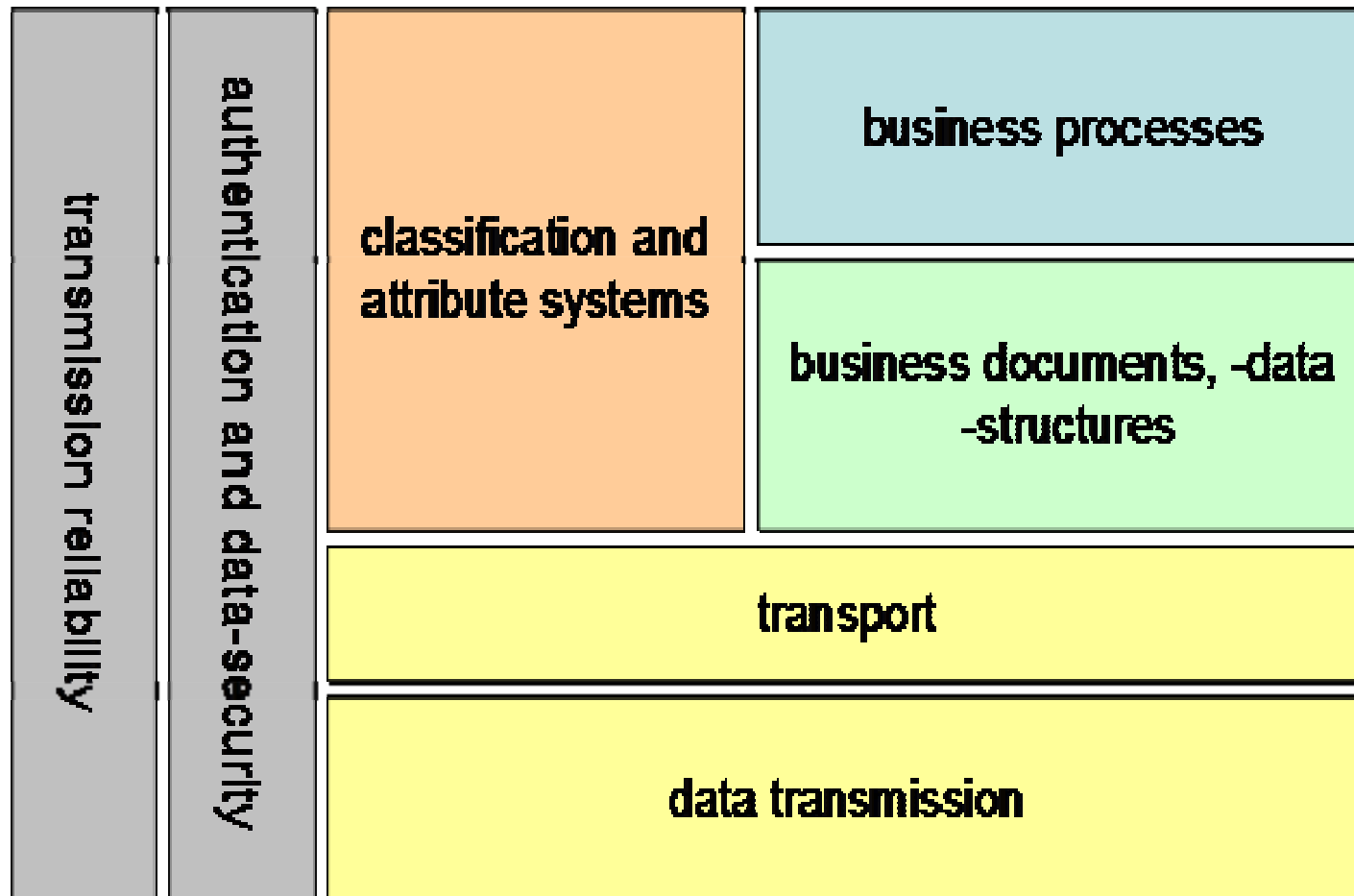
**EUROMIND workshop – Standardization of data exchange
in shipbuilding**

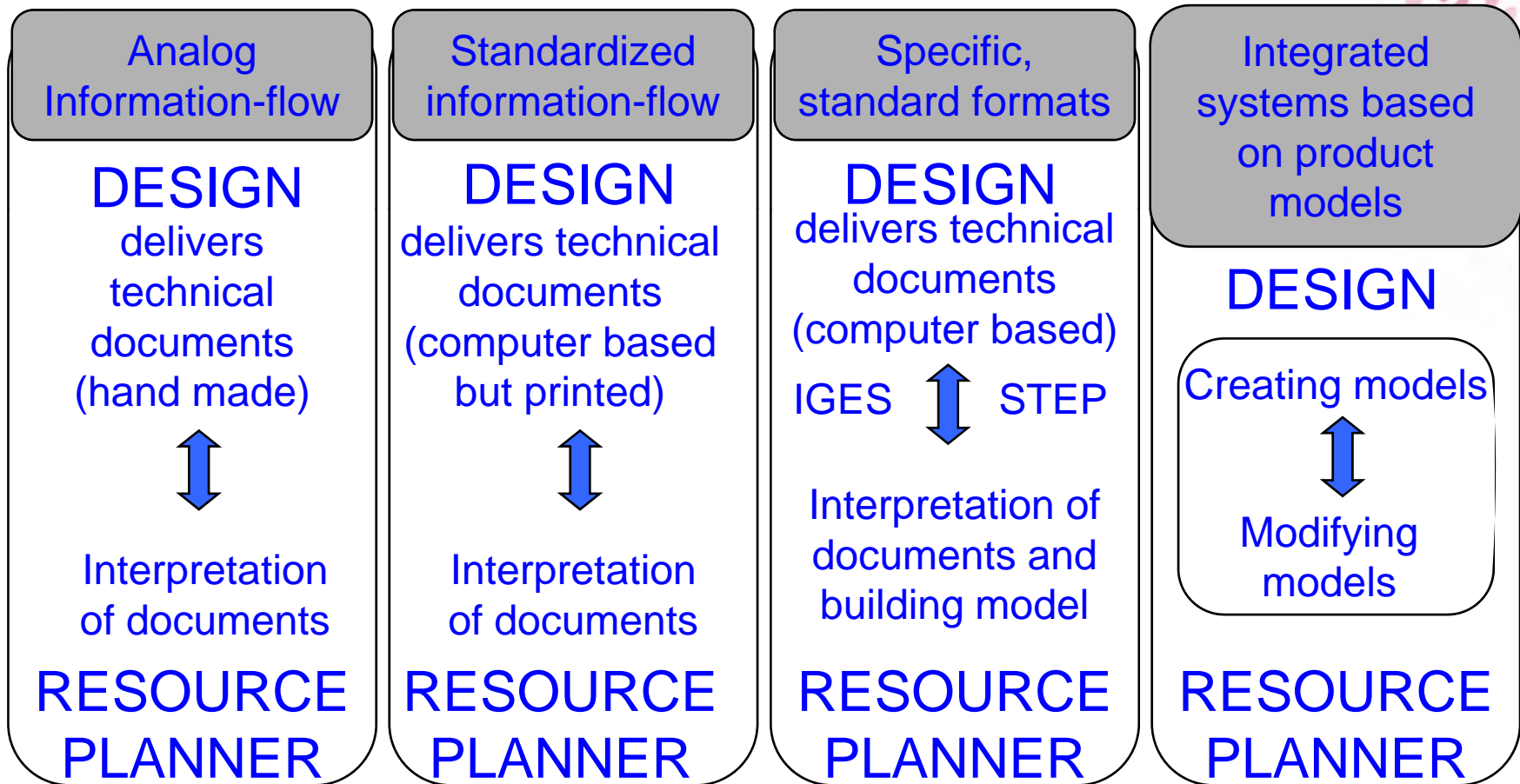
April 22nd, 2008

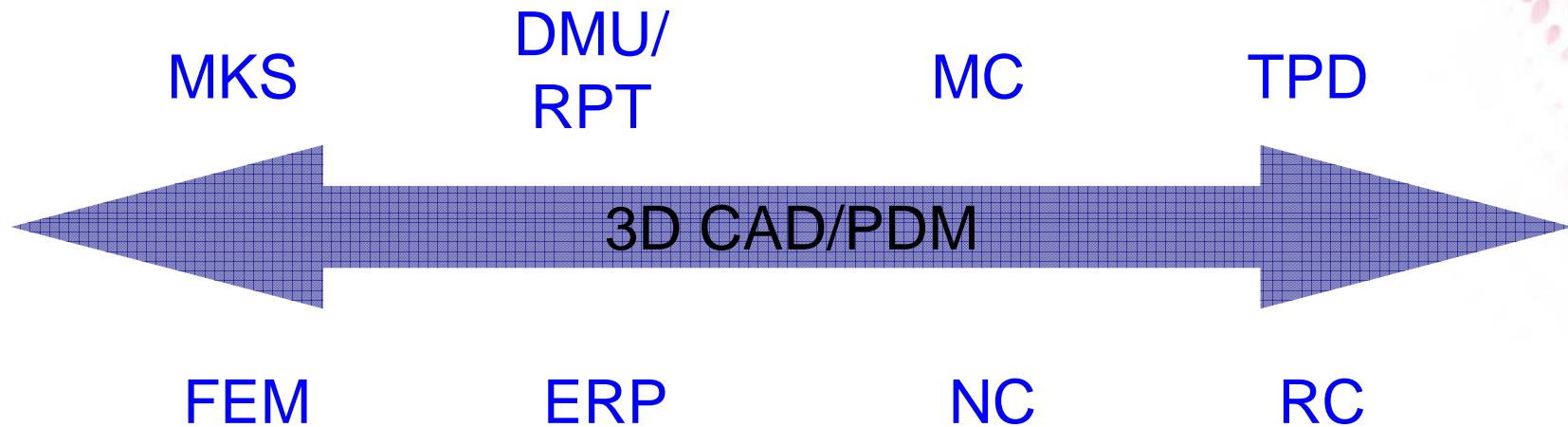
Delft, the Netherlands



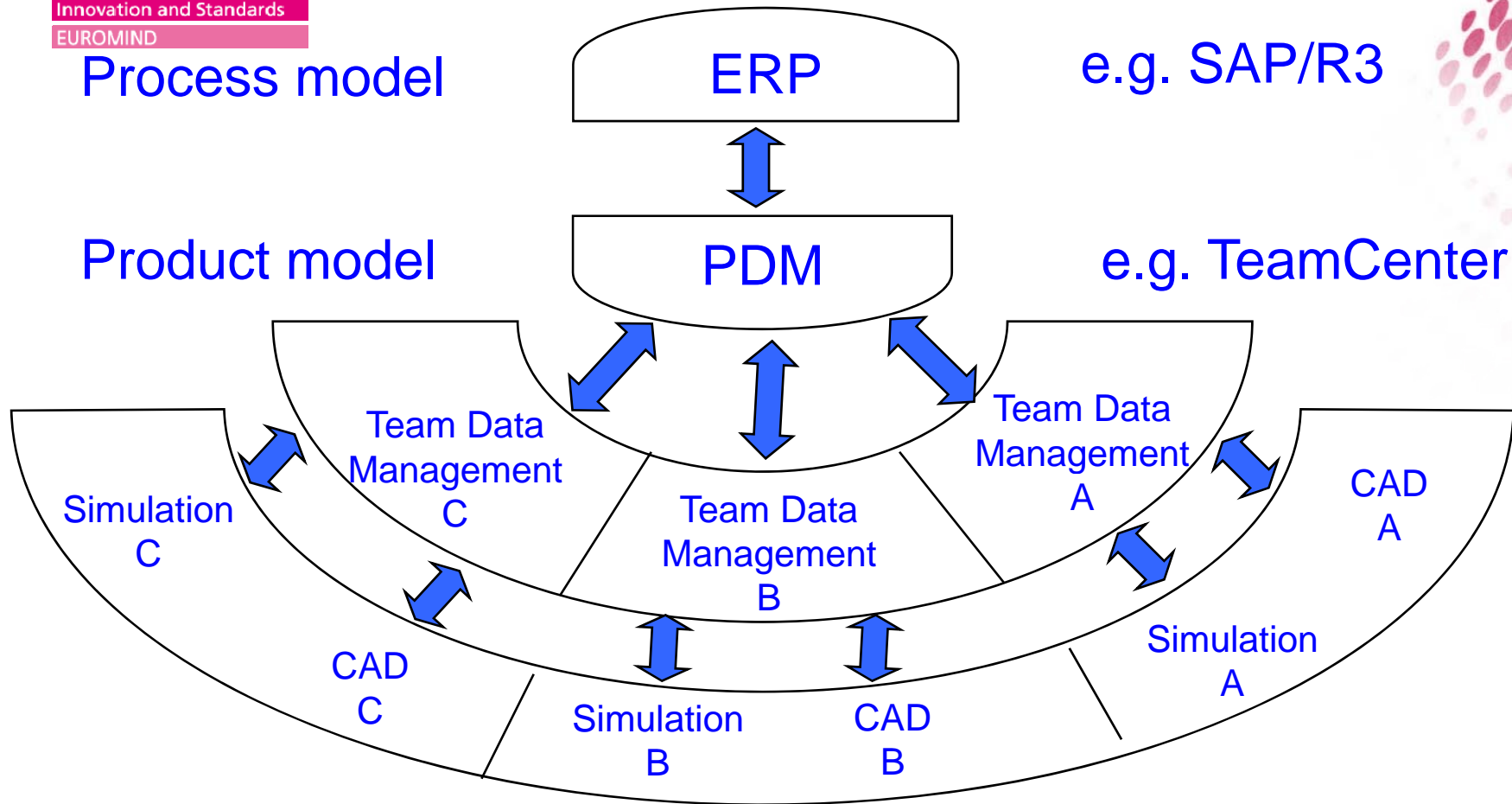
➔ What kind of data does a manufacturer need from a supplier to work with his models?





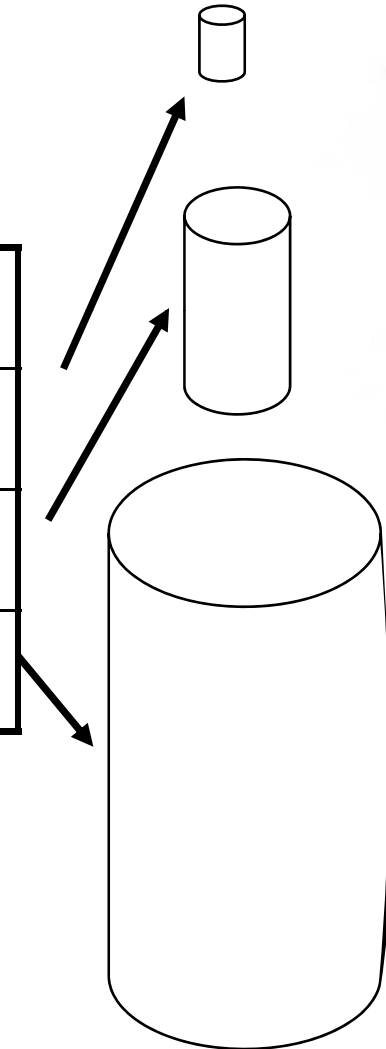


- MKS – Multi body simulation
- FEM – Finite element method
- DMU – Digital mockup
- ERP – Enterprise Resource planning
- MC – Measurement controlled
- NC – Normal controlled
- TPD – Technic. Product documentation
- RC – robotic controlled





Part #	height	Diameter
001	1	1
002	5	3
003	10	7





e.g. Sachmerkmal-Leiste according to
DIN 4000ff

www.din-sml.net

very useful



Process

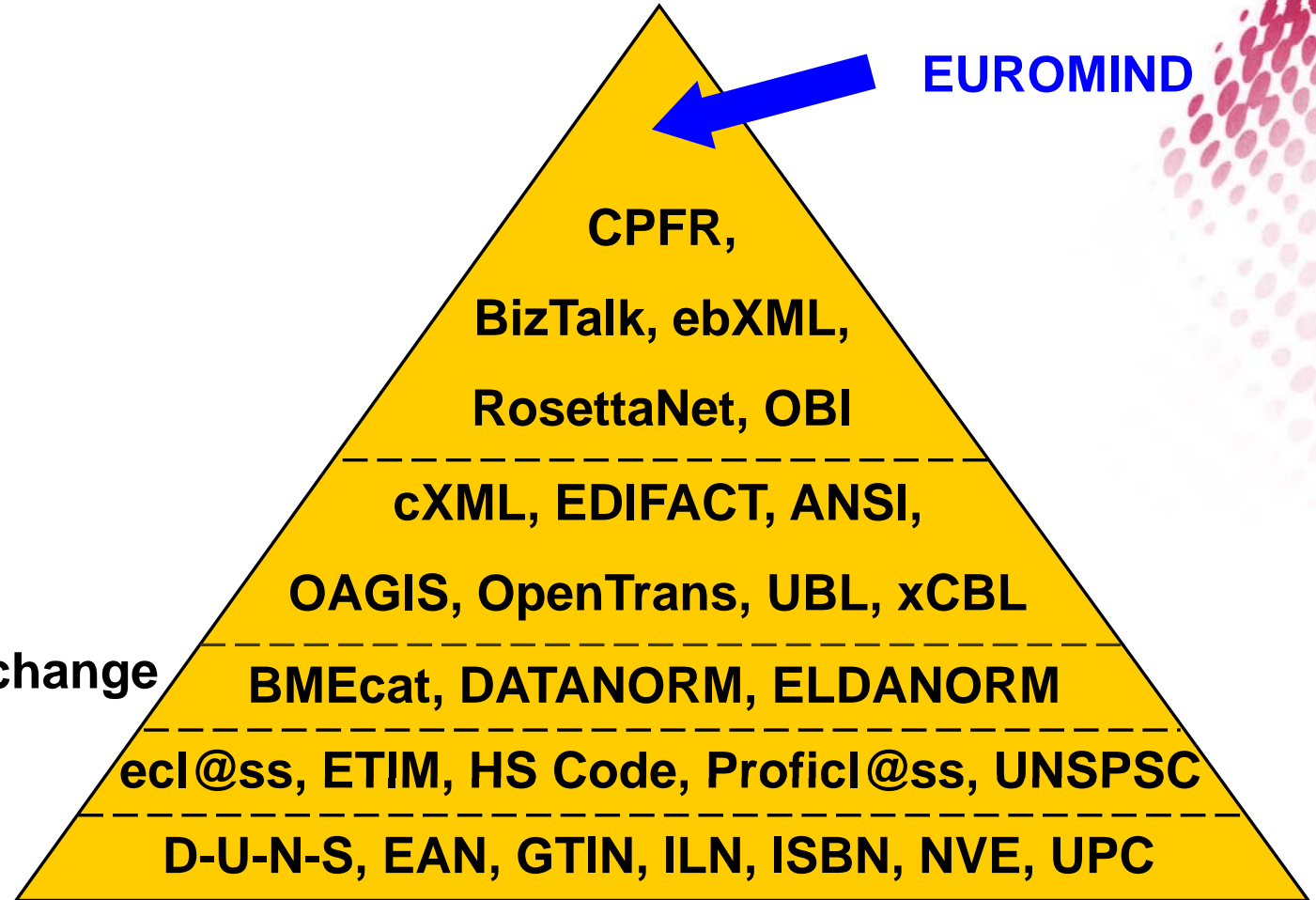
Transaction

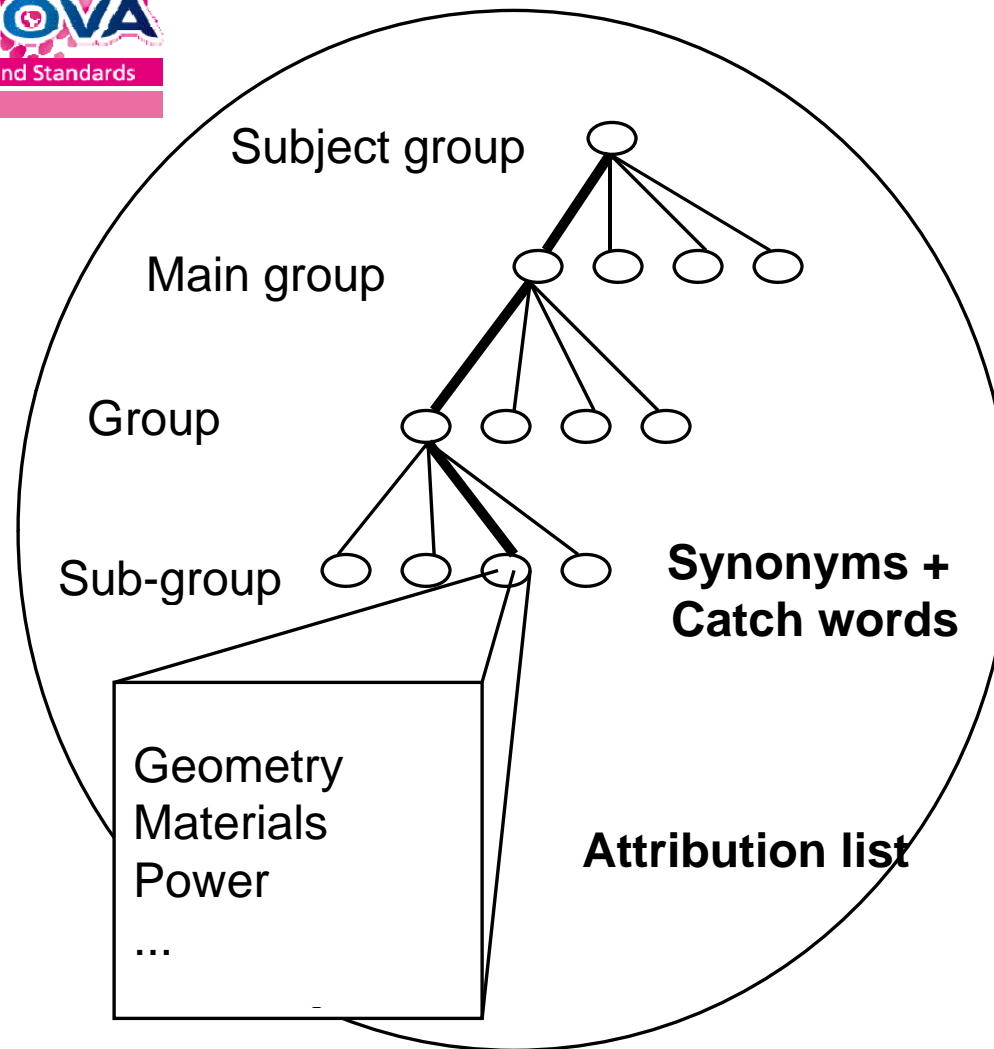
&

Catalogue exchange

Classification

Identification





- cooperates with DIN → standardized properties
- cooperates with ETIM → a lot of content



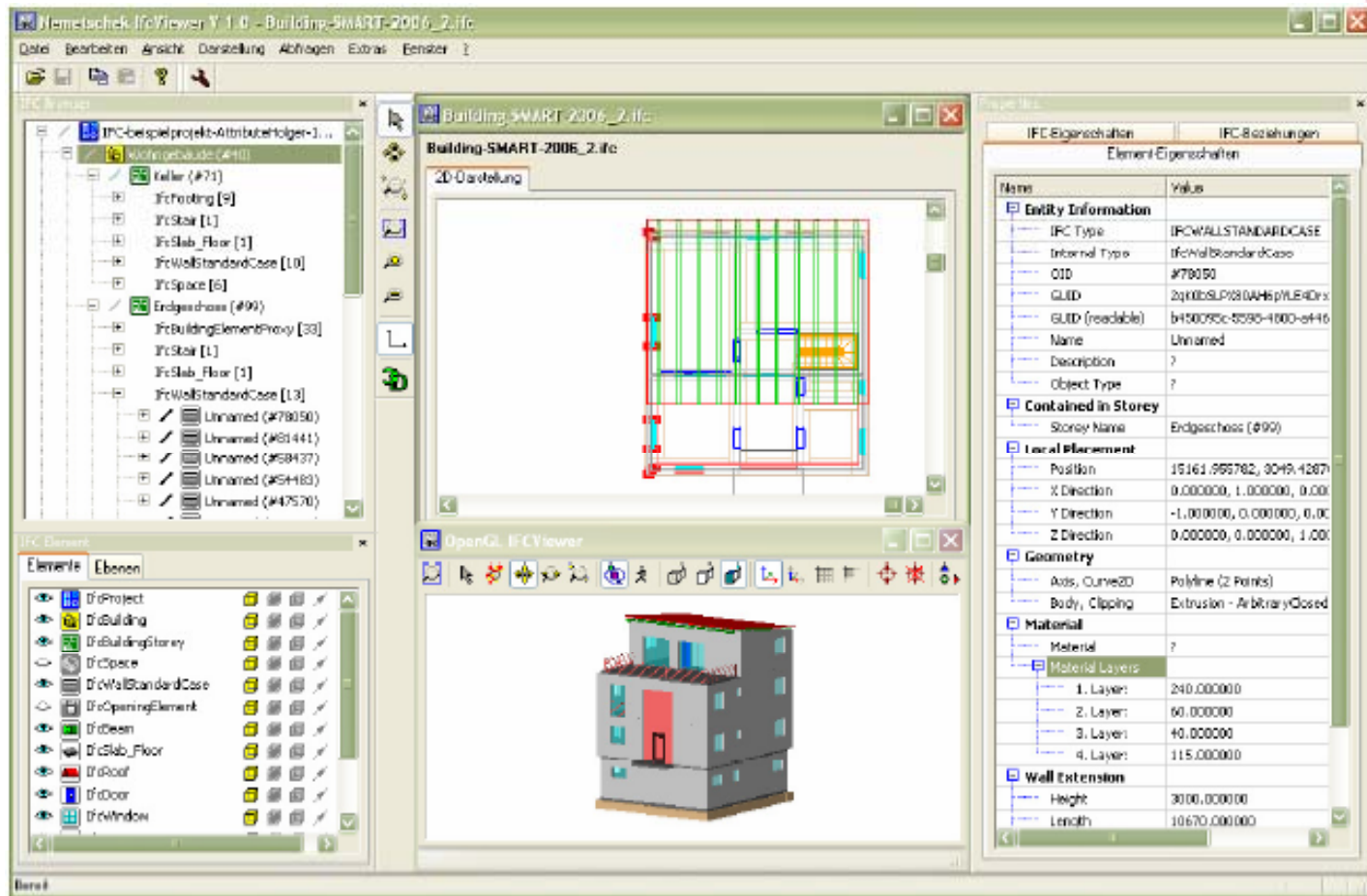
- **Name of class:** Lamp
- **Synonym:** Bulb
- **Techn. attributes:**

Name	Typ	unit	Demand
• power	N	W	
• voltage	N	V	
• socket	A		(E14, E27)
• Colour	B		(Blue,...)



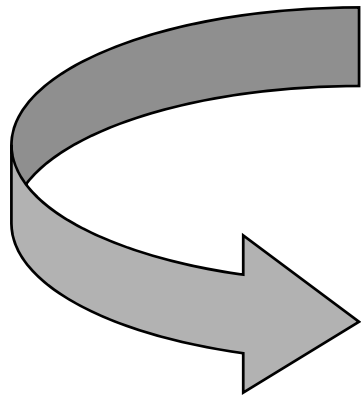
- **Marketing text:**
- **Picture: ...**







- through interoperability between tools;
- for all phases of the engineering process;



Digital Mockups



➔ What kind of data does a manufacturer need from a supplier to work with his models?